

METAL BUILDING SQ. FT. COST REVUE

The Metal Building Sq. Ft. Cost Revue by Design Cost Data™ Magazine is a sampling of actual metal building projects taken from our database, the NHBCdb™ (National Historical Building Cost Database) to assist our readers in estimating the cost of buildings using metal components.

DCD is based on the philosophy that actual buildings, when coupled with up-to-date cost indices, are the most reliable basis for future building costs. The projects shown below have been escalated to October 2006 and targeted to a historical location factor of 1 (see DCD Regional Modifiers on page 42 of this issue). Please note that the Division Costs are based on Total Building Costs.

COMMERCIAL

Motorcycle Sales & Service

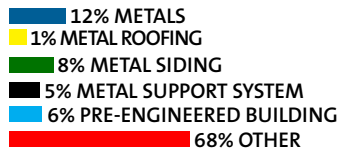
Roof: Metal

Walls: Metal Siding

39,684 Sq. Ft. 2 Floors

Total Building Sq. Ft. Cost \$140.00

DIV. 5	Metals Sq. Ft. Cost \$16.42
DIV. 7	Metal Roofing Sq. Ft. Cost \$1.57 Metal Siding Sq. Ft. Cost \$11.77
DIV. 9	Metal Support System Sq. Ft. Cost \$7.22
DIV. 13	Pre-Engineered Building Sq. Ft. Cost \$7.99



Cellular Phone Sales Building

Roof: Metal

Walls: Metal Siding

4,320 Sq. Ft. 1 Floor

Total Building Sq. Ft. Cost \$219.53

DIV. 5	Metals Sq. Ft. Cost \$50.51
DIV. 7	Manufactured Roofing & Siding Sq. Ft. Cost \$26.85

CIVIC

Public Library

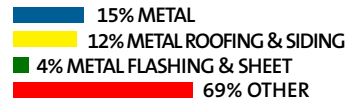
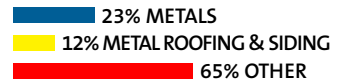
Roof: Metal

Walls: Metal Siding

54,000 Sq. Ft. 2 Floors

Total Building Sq. Ft. Cost \$147.55

DIV. 5	Metals Sq. Ft. Cost \$21.82
DIV. 7	Manufactured Roofing & Siding Sq. Ft. Cost \$17.41 Flashing & Sheet Metal Sq. Ft. Cost \$5.39



EDUCATIONAL

High School Arts Center

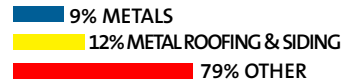
Roof: Metal

Walls: Siding & Masonry

7,982 Sq. Ft. 1 Floor

Total Building Sq. Ft. Cost \$116.51

DIV. 5	Metals Sq. Ft. Cost \$10.11
DIV. 7	Manufactured Roofing & Siding Sq. Ft. Cost \$14.55



Continued on page 22

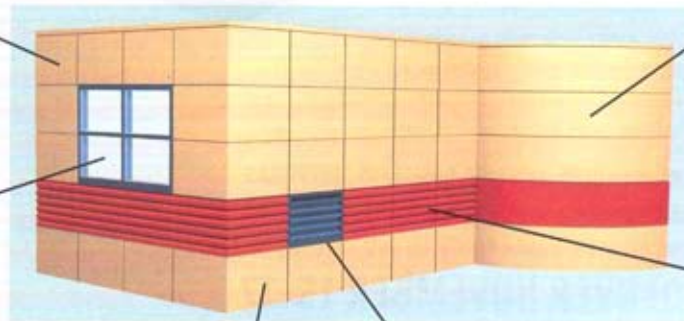
Benchmark = Integration + Design Flexibility

Fiat Metal Wall Panels

Designwall panels are offered in several series, with a choice of width and length modules, thicknesses, design features, thermal values and colors.

Flushglaze 4500

New architectural window system integrates with Benchmark 2" thick horizontal panels. Thermal breaks in all components, positive water barrier and drainage, concealed splice plates, front set glass pocket, and snap-lock frame connectivity.



Granitstone™ Panels

New factory-applied acrylic aggregate finish offers the attractive look of sprayed stucco in a lightweight insulated panel.

Integrated Louvers

Louvers by American Warming & Ventilating for Benchmark are designed to integrate with Benchmark panels.

Complex Shapes

Factory-fabricated curves, folded corners, fascia-soffit bends and other custom shapes are built to your design and delivered ready to install.

Ribbed Panels

New profiled panel with 13/16" ribs spaced 4" apart adds a tasteful accent to the building design.

Get more design options than you've ever had before from Benchmark. Big jobs or small, we deliver true architectural versatility. Call us to discuss your design requirements.

Benchmark
ARCHITECTURAL SYSTEMS, INC.
A Metecno Group Company

P.O. Box 07928 • 720 Marion Road • Columbus, OH 43207
(614) 444-0110 • Fax: (614) 444-7759 • www.benchmarkpanels.com

Complex Look. Simple Design.

Project: Car Sense
Owner: Fran McGowen - Hilltown, PA
General Contractor: W.K. Smith Construction - Phoenixville, PA
Star Builder: Schlosser Steel Buildings - Hatfield, PA



With Star Buildings,

**a simple design
doesn't have to look like one.**

Star Building Systems are designed to be simple to construct, yet rich in quality. Plus, with a large network of builders, Star can meet all of your building needs. Other advantages that go beyond conventional construction include:

- ★ Excellent thermal efficiency
- ★ Architecturally flexible design
- ★ Faster construction-quicker occupancy
- ★ Long life, energy efficient materials throughout
- ★ Column-free interiors

To contact your local Star builder
or for more information, call:

1-800-879-STAR (7827)

E-mail: Star.Marketing@StarBuildings.net
Or contact us on the Internet at: www.starbuildings.com



Star Building Systems
An NCI Company

8600 South I-35 • P.O. Box 94910
Oklahoma City, OK 73143
FAX (405) 636-2037



METAL BUILDING SQ. FT. COST REVUE

Continued from page 18

OFFICE

Office Building

Roof: Metal 9% METALS
Walls: Metal Siding 7% METAL ROOFING & SIDING
18,000 Sq. Ft. 2 Floors 84% OTHER
Total Building Sq. Ft. Cost \$232.00
 DIV. 5 Metals Sq. Ft. Cost \$21.12
 DIV. 7 Manufactured Roofing & Siding Sq. Ft. Cost \$17.25

INDUSTRIAL

Storage Facility

Roof: Metal 1% METALS
Walls: Metal Siding 18% PRE-ENGINEERED BUILDING
13,125 Sq. Ft. 1 Floor 81% OTHER
Total Building Sq. Ft. Cost \$46.41
 DIV. 5 Metals Sq. Ft. Cost \$0.48
 DIV. 13 Pre-Engineered Structure Sq. Ft. Cost \$8.53

RECREATIONAL

Community College Recreational Center

Roof: Metal 9% METALS
Walls: Metal Panel 22% METAL PANELS
43,500 Sq. Ft. 1 Floor 69% OTHER
Total Building Sq. Ft. Cost \$119.72
 DIV. 5 Metals Sq. Ft. Cost \$10.17
 DIV. 7 Metal Panels Sq. Ft. Cost \$25.99

RELIGIOUS

Church

Roof: Metal 12% METALS
Walls: Metal Siding 14% METAL ROOFING & SIDING
22,176 Sq. Ft. 1 Floor 4% METAL SUPPORT SYSTEMS
Total Building Sq. Ft. Cost \$160.00 70% OTHER
 DIV. 5 Metals Sq. Ft. Cost \$18.40
 DIV. 7 Manufactured Roofing & Siding Sq. Ft. Cost \$22.47
 Metal Support Systems \$5.66

RESIDENTIAL

Residential Home

Roof: Metal
Walls: Metal Siding 15% METAL ROOFING & SIDING
2,100 Sq. Ft. 2 Floors 85% OTHER
Total Building Sq. Ft. Cost \$109.27
 DIV. 7 Manufactured Roofing & Siding Sq. Ft. Cost \$16.09

Residential Home

Roof: Shingle
Walls: Metal Framing/Mas. Ext. 36% STRUCTURAL FRAMING
3,300 Sq. Ft. 1 Floor 64% OTHER
Total Building Sq. Ft. Cost \$197.38
 DIV. 5 Structural Metal Framing Sq. Ft. Cost \$71.76

The NHBCdb is an online resource of over 1,100 actual projects, as featured in DCD, located online at DCD.COM for subscribers of Design Cost Data. DCD Subscribers have access to this interactive database for preliminary cost estimating, cost modeling, 'what if' scenarios, and more. If you would like to subscribe to Design Cost Data please give us a call at 800-533-5680 or subscribe online at DCD.COM.